

Ultracell®

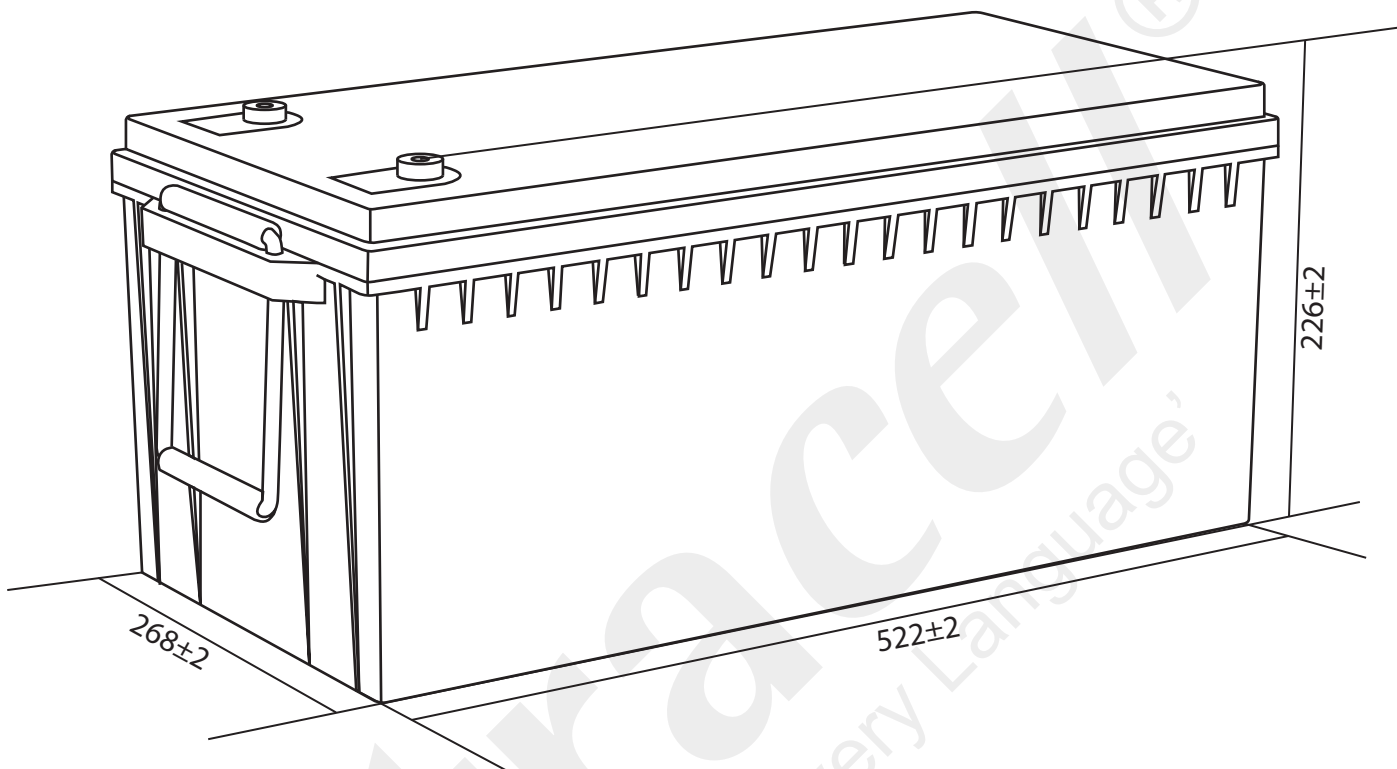
'Quality in Every Language'

UC250-12E

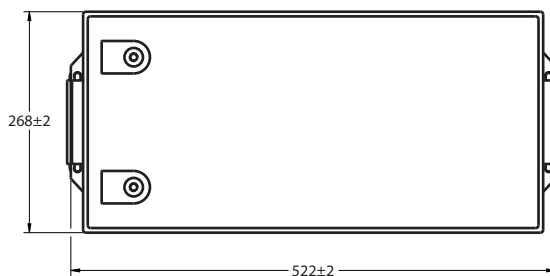
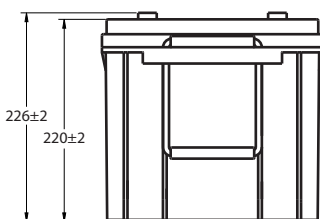
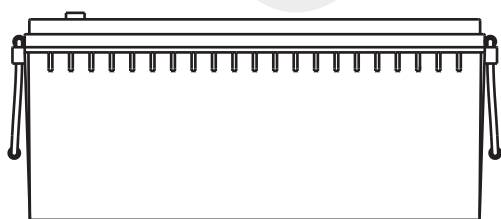
12V 250Ah (C₁₀)

12V 288Ah (C₁₀₀)

Deep Cycle Series



Technical Dimensions (mm)

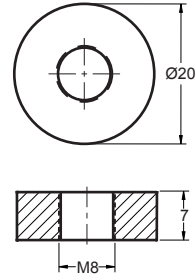


Image



Terminal Dimensions (mm)

Standard Terminal: F11



Technical Specification

Output	Nominal Voltage	12V
	Nominal Capacity (10HR)	250Ah
Terminal Type	Standard Terminal	F11
Container Material	Standard Option	ABS
	Flame Retardant Option (FR)	ABS (UL94:VO)
Rated Capacity	(20HR 1.80V/cell, 25°C)	262.0 Ah/13.1A
	(10HR 1.80V/cell, 25°C)	250.0 Ah/25.0A
	(5HR 1.75V/cell, 25°C)	227.5 Ah/45.5A
	(3HR 1.75V/cell, 25°C)	207.3 Ah/69.1A
	(1HR 1.60V/cell, 25°C)	159.4 Ah/159.4A
Max Discharge Current	2500A (5s)	
Internal Resistance	Approx 2.5mΩ	
Discharge Characteristics	Operating Temp Range	Discharge: -15 ~ 50°C Charge: 0 ~ 40°C Storage: -15 ~ 40°C
	Nominal Operating Temp Range	25 ± 3°C
	Cycle Use	Initial Charging Current less than 75A. Voltage 14.4V ~ 15.0V @ 25°C Temp. Coefficient -30mV/°C
	Standby Use	No limit on initial charging current. Voltage 13.5V ~ 13.8V @ 25°C Temp. Coefficient -20mV/°C
	Capacity affected by Temperature	40°C 103% 25°C 100% 0°C 86%
Design Floating Life at 20°C	8 Years	

Self Discharge

Ultracell® UC batteries may be stored for up to 6 months at 25°C and then a refresh charge is required. For higher temperatures the time intervals will be shorter.

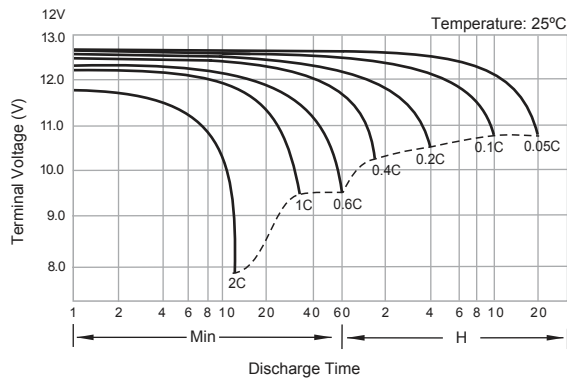
Constant Current Discharge / Constant Power Discharge At 25°C (Amperes & Watts/Cell)

A = Amperes W = Watts

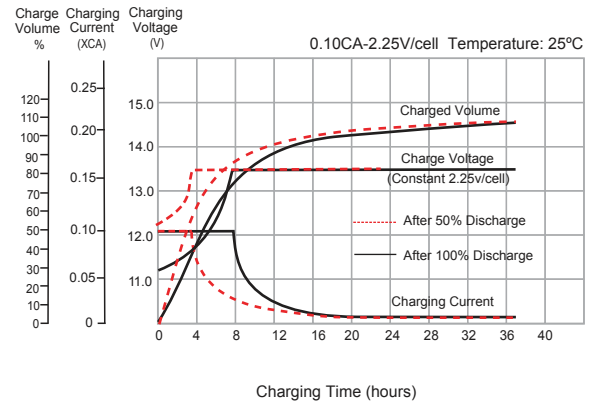
F.V/TIME	10 min	15 min	20 min	30 min	45 min	60 min	90 hours	2 hours	3 hours	4 hours	5 hours	6 hours	8 hours	10 hours	20 hours
1.85V/cell	362.5 668.0	320.7 607.2	252.2 479.7	225.5 430.9	164.9 317.0	139.7 270.1	101.2 196.3	85.1 165.5	62.4 122.0	49.0 96.1	42.5 83.7	37.5 74.0	28.8 57.2	23.9 47.5	12.7 25.2
1.80V/cell	411.4 747.2	363.4 679.2	285.1 536.5	245.5 465.4	174.7 333.7	144.7 278.3	104.7 202.0	87.9 170.1	67.8 131.8	52.3 102.2	44.7 87.7	40.3 79.2	30.3 60.0	25.0 49.6	13.1 26.1
1.75V/cell	446.2 797.5	393.4 724.9	307.8 572.6	250.5 471.3	181.0 343.7	151.8 290.7	110.0 211.4	92.5 178.3	69.1 134.0	53.3 103.7	45.5 88.9	40.6 79.6	30.5 60.1	25.3 50.1	13.3 26.3
1.70V/cell	475.7 838.4	417.8 762.0	326.4 602.0	255.5 476.7	184.6 348.1	154.8 294.9	112.2 214.6	94.4 181.2	70.4 136.1	54.2 105.2	46.3 90.1	40.8 79.9	30.9 61.0	25.5 50.5	13.4 26.6
1.67V/cell	490.8 852.0	430.0 774.4	335.3 611.8	259.3 480.1	187.3 351.3	157.1 297.6	113.9 216.7	95.7 183.0	71.1 136.8	55.0 106.4	47.2 91.7	41.0 80.0	31.4 61.7	25.8 51.1	13.6 26.9
1.60V/cell	507.6 863.9	443.4 785.3	343.9 620.4	263.0 482.1	190.1 353.0	159.4 299.8	115.5 218.4	97.1 184.5	71.7 137.3	55.7 107.2	47.9 92.6	41.3 80.3	31.8 62.4	26.1 51.6	13.7 27.1



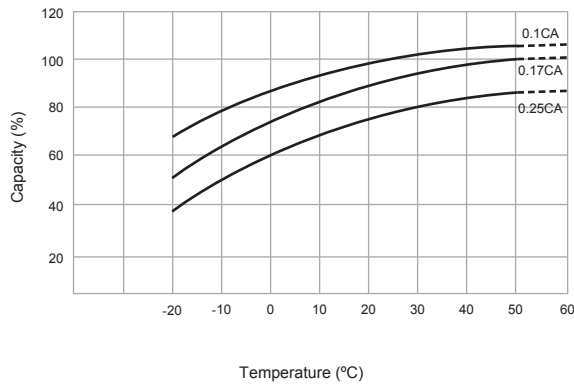
Discharge Characteristics



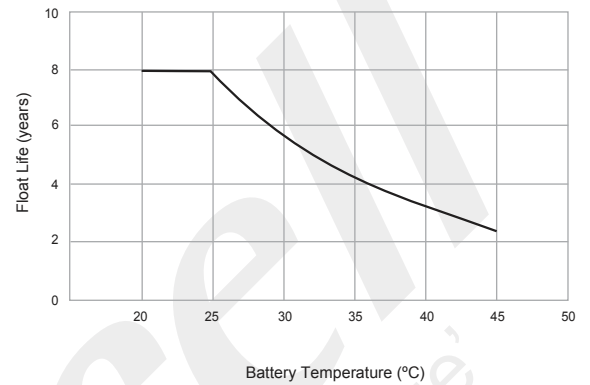
Float Charging Characteristics



Temperature Effects in Relation to Battery Capacity



Effects of Temperature on Long Term Float Life



UC250-12E
 12V 250Ah (C₁₀)
 12V 288Ah (C₁₀₀)
 Deep Cycle Series

