

User Manual

▪ DTU-G100 3rd Gen



Contents




1. Important Safety Information	3
1.1 Read this First	3
1.2 Safety Instructions	3
1.3 User.....	3
1.4 Support and Contact Information.....	3
1.5 Other Information	4
2. About Hoymiles Microinverter System	4
2.1 The Microinverter	4
2.2 The DTU	4
2.3 The Hoymiles Monitoring Server	4
3. DTU Installation	5
3.1 System Capacity	5
3.2 Basic Conditions Required	5
3.3 Dimensions	5
3.4 Interface Layout	5
3.5 Local Install Assistant.....	6
3.6 System Installation Sequence.....	6
3.7 DTU Installation Procedure	6
4. Site creation on HMP.....	8
5. Customer Login	8
6. Complete Installation Map	9
7. Browse the Web Station.....	9
Log in your account, browse the web station.	9
8. View Phone APP	10
9. LED indicator working status description.....	10
10. Troubleshooting.....	11
11. Datasheet.....	11

1. Important Safety Information

1.1 Read this First

This manual includes important instructions for installing and maintaining the Hoymiles Data Transfer Unit (DTU).

1.2 Safety Instructions

Symbol	Usage
	Indicates a hazardous situation that can result in deadly electric shock hazards, other serious physical injuries, or fire hazards.
	Indicates directions which must be fully understood and followed in entirety to avoid potential safety hazards including equipment damage or personal injury.
	Indicates this points out that the described operation must not be carried out. The reader should stop, use caution, and fully understand the operations explained before proceeding.

- Note that only professionals can install or replace DTU.
- Do not try to repair DTU without Hoymiles' approval. If DTU is damaged, please send the DTU back to your installer for repairing/replacing. Disassembling DTU without Hoymiles' approval will invalidate remaining of the warranty period.
- Please read all instructions and warnings on the technical specifications carefully.
- Do not use Hoymiles products in a way that is not suggested by manufacture. Doing so may cause death or injury to persons or damage to equipment.

1.3 User

This manual is only for professional installation and maintenance personnel to use.

1.4 Support and Contact Information

If you have technical queries concerning our products, please contact your system installer or distributor. If further support is required, contact Hoymiles' support at this link.

- www.hoymiles.com
- Hoymiles customer service center: service@hoymiles.com

1.5 Other Information

Product information is subject to change without notice. The user manual will be updated frequently, and please refer to Hoymiles official website at www.hoymiles.com for the latest version.

2. About Hoymiles Microinverter System

2.1 The Microinverter

It converts the DC output of solar modules into grid-compliant AC power. It sends the output information of PV panels and the operation data of the microinverters to the DTU, which is the hardware basis of the panel-level monitoring.

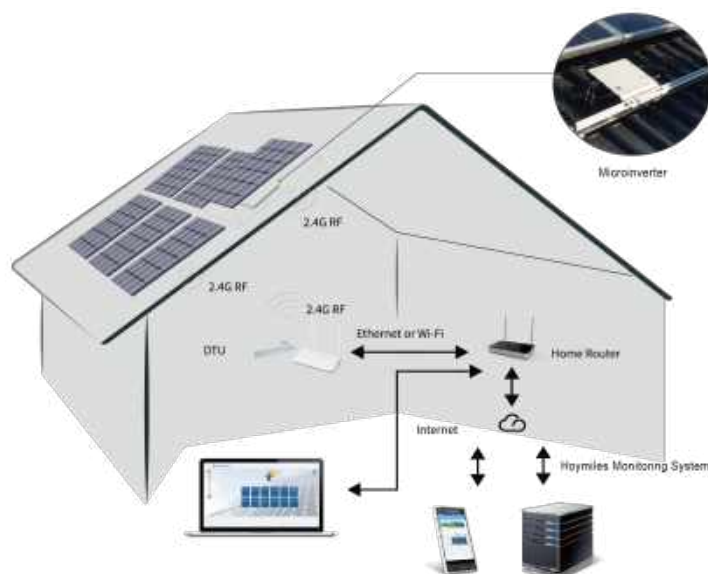
With conversion efficiency up to 96.7% and MPPT efficiency up to 99.9%, Hoymiles microinverters rank into the first class of the world' s Microinverter industry.

2.2 The DTU

The DTU is the key component in Hoymiles microinverter system. It works as the communication gateway, which operates between the Hoymiles microinverters and the Hoymiles Monitoring Server. The DTU communicates with the microinverter wirelessly via 2.4GHz Proprietary RF (Nordic), collecting the operation data of the system. Meanwhile, the DTU connects to the Internet via router and communicates with Hoymiles Monitoring Server. The microinverter system operation data will be uploaded to Hoymiles Monitoring Server via DTU.

2.3 The Hoymiles Monitoring Server

It collects the operation data and status of the microinverters in the system and provides the panel-level monitoring for the users and maintenance staff. The following diagram shows the Hoymiles Microinverter system.



3. DTU Installation

3.1 System Capacity

The DTU is capable of monitoring up to 99 pieces of single unit or 49 pieces of two in one unit or 24 pieces of four in one unit. If the communication between the DTU and microinverter caused by the installation conditions, the number of PV modules that the DTU can monitor may be reduced.

3.2 Basic Conditions Required

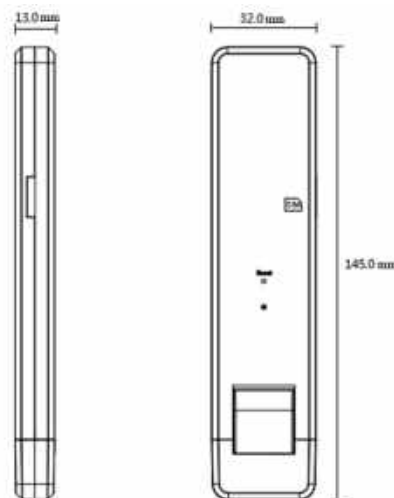
Before installing the DTU, ensure the site meets the following requirements:

- The straight distance between DTU and Microinverter shall be less than 5 meters.
- It should be one meter above the ground, 0.8 meters away from the corner.
- Stable Internet reception.

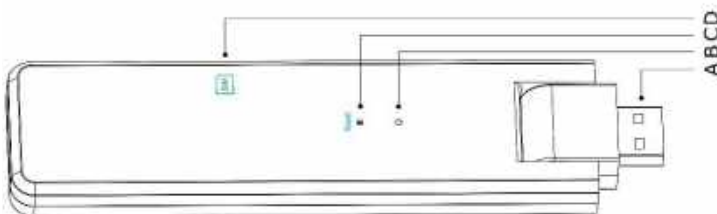
The environmental requirements for DTU installation:

- Away from dust, liquid, acidic, or corrosive gas.
- Temperature is between -20°C and 55°C.

3.3 Dimensions



3.4 Interface Layout



Item	Description
A	USB Connector
B	Status Indicator
C	Reset Bottom
D	SIM Card Slot

3.5 Local Install Assistant

Local Install Assistant is a new function integrated with DTU-G100 3rd Gen, please download the Installer App (for installer/distributor use only) first.

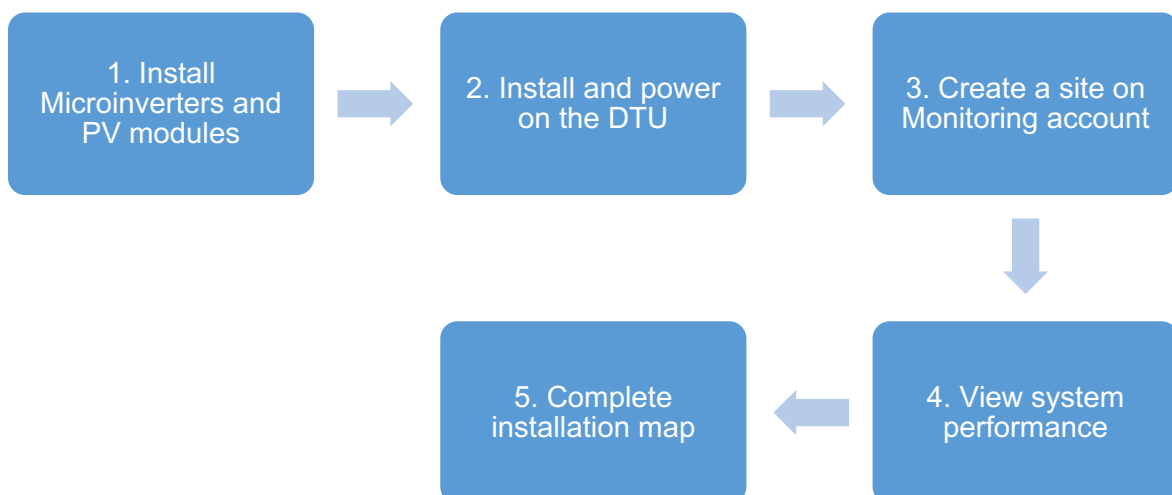


DTU-G100 has improved from the previous generation of DTU product, and developed with this new function that allows installer:

- A. Station overall Inverters status indication allows the installer to see how many MI under this DTU is working properly (and the details for each MI) and how many is abnormal (and the details for each MI) with one glance of eyes;
- B. Add the Connection status, which will display the signal strength between each MI with connected DTU, so that installer can adjust the DTU installation location accordingly. This function will simplify the DTU installation, and avoid the second visit for installer due to the poor connection between DTU and certain MI.

Note: Please refer to “Hoymiles Local Install Assistant Technical Note” for more details.

3.6 System Installation Sequence



3.7 DTU Installation Procedure

(1) Install the PV Modules and microinverters

Please refer to the Microinverter's Manual or Quick Installation Guide for the detail installation steps.

(2) Locate the DTU

The maximum communication distance of Hoymiles DTU is 150m in open space. The walls, roofs, or other obstacles in between will affect the signal and reduce the communication distance in the real installation.

The range of signal reduction for possible obstacles at the site has been shown below:

Material	Relative signal range reductions
Wood/Glass	0-10%
Stone/Pressed cardboard	10%-40%
Reinforced concrete (reduction increases with the amount of reinforcement)	10%-90%
Metal	Up to 100%

Therefore, the DTU shall be placed as close to the microinverters as possible at the site to ensure good communication between DTU and microinverters.

(3) Insert SIM Card

Insert the SIM card into the card slot on the side of DTU.

(4) DTU Installation

a. Connect the DTU to the adapter and plug it into the wall socket. (Figure 1)

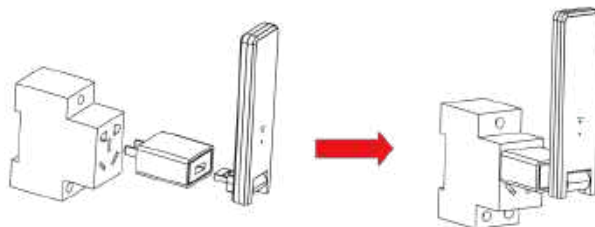


Figure 1

b. If using Power Strip, please make sure it is placed at least 1 meter above the ground and try to install the DTU 90 degrees vertical to the ground as much as possible (figure 2).

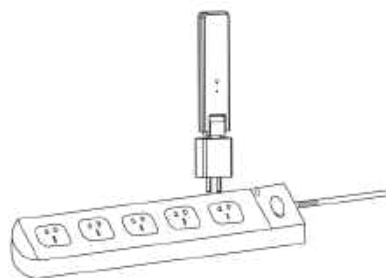


Figure 2

Note : Please do not install the DTU direct above the metal or concrete to prevent the signal dilution.

(5) Start Procedure

Once the DTU is powered on, the red, green and blue lights will flash for one second in turns, then the blue light will turn on for 40 seconds for DTU self-checking. After this, the green light will be flashing until Networking completed.

Note :

- (1) Non-professionals do not modify other parameters.
- (2) The “Reset” button on the DTU shell is only for customers who use the enterprise WiFi.

4. Site creation on HMP

- A. Install Hoymiles Installer APP by searching “Hoymiles” at the App Store (IOS) or Play Store (Android).
- B. Open the APP and login in with your installer account name and password. If you are a new installer with Hoymiles, please apply an Installer account from your distributor in advance.
- C. Add Station, select the “Station” tab on the bottom, then select “⊕” on the right top side of the page.
- D. Select “Quick” for Single-DTU and “Profession” for Multi-DTU.
- E. Please fill in the station details accordingly, and press “Next” after completed.
- F. Press “Add DTU ID”, scan the DTU ID (or you can manually input ID) and press “Next” after complete.
- G. Click “Start binding” and choose the angle and tilt base on the installation.
- H. Scan the Microinverter ID (or you can manually input the ID) and click the tick after completing each ID input. Press “Finish” once all Microinverter ID has been input.
- I. Disable the Scan function on the top of the right-hand side and design the Layout base on the installation. Click the tick box on the top of the right-hand side, and then select “Next” after completing the design.
- J. Upload a picture of the site and select “Finish” to complete the site creation.
- K. The new site will appear on the Station list from the Installer account.
- L. Please click the “Networking” button after the power station is created.
- M. Please wait about 30 minutes, the station will show online, and all the MI-IDs are found.

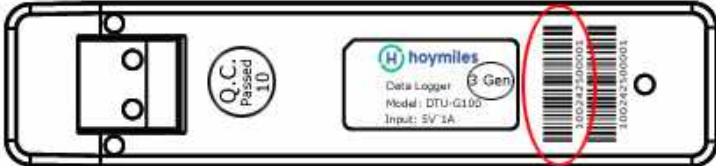
5. Customer Login

- A. Please download the End User App. You can search “Hoymiles” at the App Store (IOS) or Play Store (Android).
- B. Log in with the Password and Username that has been set up by Installer on the previous step (Section 6 step e), and press “Login”.
- C. Customers will able to view all details once the data start to upload, normally it will need around 30 minutes for the first data coming through.
- D. Customers can also view the Microinverter generating details via accessing the HMP monitoring platform website at <https://world.hoymiles.com>.

6. Complete Installation Map

When the system is energized, and the DTU detects the microinverters, you need to complete the installation map.

A. Peel the serial number label from the DTU and place it on the installation map.



B. Complete system information of the installation map shown below.

To sheet: _____

N S E W (circle area)		Panel Group: Azimuth: Tilt: Sheet ___ of ___		Customer information:				DTU Serial Number:							
	1	2	3	4	5	6	7	8	9	10	11	12	13	14	
A															
B															
C															
D															

To sheet: _____

7. Browse the Web Station

Log in your account, browse the web station.



8. View Phone APP

Download mobile phone APP by search “Hoymiles” at App Store (IOS) or Play Store (Android), log in with customer/installer account name and password, all installed Microinverters operating details will be able to view from there.



9. LED indicator working status description

Red Light	Description
Flashes every 1 second	No SIM Card
Flashes every 0.5 seconds	DTU disconnect with server
Blue Light	Description
Flashes every 1 second	No ID
Flashes every 0.5 seconds	Received data from server
Green Light	Description
Flashes every 0.5 seconds	The search ID is incomplete
Lights up constantly	Normal
RED+GREEN+BLUE	Description
Each color flashes once every 1 second	Power on
Each color flashes twice every 1 second	Firmware upgrade

10. Troubleshooting

Indicator	Status	Description	Solution
Red	LED Flash in Red every 1 second:	No SIM Card	<ul style="list-style-type: none"> ● Check if the SIM Card has been inserted correctly
	LED Flash in Red every 0.5 seconds:	DTU disconnect with server	<ul style="list-style-type: none"> ● Check if SIM card still has value inside ● Double-check the Port and server address inside the DTU (Please contact Hoymiles Tech. Support team for the correct address)
Blue	LED lights up in Blue Double-check:	W100 has a Wi-Fi connection but without ID inside.	<ul style="list-style-type: none"> ● Complete the site creation on APP or Monitoring platform ● Complete networking
	LED Flash in Blue every 1 second:	No ID	<ul style="list-style-type: none"> ● Complete networking
Green	LED lights up in Green every 0.5 seconds:	The search ID is incomplete	<ul style="list-style-type: none"> ● Re-locate the DTU to somewhere close to both router and Microinverter

11. Datasheet

Model	DTU-G100
Communication to Microinverter	
Signal	2.4GHz Proprietary RF (Nordic)
Maximum distance (open space)	150M
Maximum number of inverters connected	99
Communication to Cloud	
GPRS Communication	GSM (850/900/1800/1900MHz)
Data Upload Rate	15 minutes
Power Supply	
Type	External Adapter with USB port
Adapter input voltage/frequency	100 to 240 V AC / 50 or 60Hz
Adapter output voltage/current	5V / 2A
Power consumption	1.0W (Typical), 5W (Max)
Mechanical Data	
Ambient temperature (°C)	-20°C to 55°C
Size (W×H×D)	143mm×33mm×12.5mm
Weight (KG)	0.1
Mounting system	Direct power supply
Display	LED indicator light
Others	
Standard	EN60950 EN61000-3-2 EN61000-3-3
	FCC 15B / 15C